



MY GMBSC: A Stewardship Initiative



Published November 2021
Rev. Reginald M. Buckley, President



Dear Members of GMBSC,

Grace and peace be unto you. Recently, I shared with members of our newly formed cabinet that the state of the convention was, in my best estimation, "stable." Rating the convention as stable rather than strong was difficult but necessary and is in large part due to our financial health. While we can certainly appreciate that GMBSC is basically a debt-free institution with real property assets in Jackson, Natchez and Brookhaven, the reality is that our current system of giving does not allow us to advance our missions of evangelism and discipleship in an impactful way. Honestly, our current structure of giving supports little more than the hosting of meetings. We need a structure that allows for the funding of missions in order to better fulfill the great potential of our grand convention. That is what I want to share and ask that you prayerfully consider.

My GMBSC is a 3-year stewardship initiative to raise nearly 1.5 million dollars to fund current needs and future missions of our convention. By developing and implementing a multi-year, multi-level stewardship initiative such as **My GMBSC**, we can better underwrite specific missions, support stated goals, and provide for the ongoing needs of the convention. In essence, we can see convention resources funding missions and not just paying for meetings! Likewise, by implementing a system of allocated percentages from church registration fees, we can help to ensure that these missions are continuously funded. GMBSC Perpetuate reimagines the church registration fee by setting aside specific percentages to convention missions, thereby better ensuring that the convention is fulfilling missions of ministry. The details of both of these plans follow. But before you read further, consider this.

How many times have you opened a letter from the convention soliciting special offerings or gifts to fund particular projects or underwrite needs relative to facility maintenance, seminary operations or some other financial need? You know all too well the internal struggle of wanting to support the convention, but also questioning why the convention is always in such dire need. Why can't we ever seem to get ahead and move beyond the special appeal letter? I believe that it's time to take such letters out of circulation in GMBSC by reimagining how we raise, allocate and distribute funds to meet convention objectives and obligations. Special appeal letters should be just that- "special" - rather than the norm for how we operate. We can do this. It's time to do this! Join me in embracing the future of our convention and claiming **My GMBSC** and **GMBSC Perpetuate** as the way forward to fund our missions.

In His Service and Yours,
Reginald M. Buckley,
President



FINANCIAL OBJECTIVES

1. Supplement the MS Baptist Seminary @ 150k annually

Rationale: The Mississippi Baptist Seminary is owned and operated by the convention. However, the convention has not supported the seminary at a fundable level that allows it to flourish in its mission. Having received conditional accreditation status, the seminary must now meet all the state's standards before becoming a fully accredited institution. One of those standards is to demonstrate a consistent stream of revenues. Supporting the seminary at 150k annually will create the path to full accreditation and allow the seminary to focus on developing its programs of study, recruitment of students and faculty and building the necessary administrative infrastructure. The seminary would still be responsible for raising about 50k dollars annually.

2. Establish a 6-month Operational Reserves Account of \$50K

Rationale: Finances for the convention are severely limited in the months following any of the regular sessions. In the past, this has resulted in angel donors providing the convention with gap funding and/or taking out loans in order to meet monthly obligations. By establishing an operational

reserves account, the convention will prevent the need for such emergency responses to be taken in the future.

3. Make Capital Development/Improvements to Seminary and BHAC of \$400K

Rationale: GMBSC has several capital projects that need to be completed. The Jackson office is in need of roof, flooring, and HVAC repairs. The Baptist Heritage and Arts Center (Natchez) needs funding to complete the restoration/renovation of the chapel and offices to be housed in the Women's Dormitory building. Future construction of the GMBSC Campgrounds at Brookhaven need funding. By establishing a designated fund for capital development, we will be better positioned to provide for necessary repairs without asking for special gifts.

4. Create and manage a Church and Pastor Hardship Fund of \$150K

Rationale: Part of what GMBSC offers to its constituent members is the fellowship of like-minded believers who share in the successes and the struggles of the local church. As such, we recognize that there are moments when congregations and pastors face hardships brought about by

natural disasters, health failure, death, and other challenges of life. When hardships happen to constituent members of GMBSC, the convention should be available to provide some level of care and assistance. The Church and Pastor Hardship fund will allow GMBSC to walk alongside its member churches and pastors during difficult times.

5. Support Fresh Expressions Church Plants @ \$150K

Rationale: As many of the churches that comprise GMBSC model a traditional paradigm of worship, gathering, and discipling, we recognize that engaging a new generation of people for Christ may necessitate a diversity or a mixed ecology of churches. GMBSC must proactively position itself to engage culture with fresh expressions of our faith. By intentionally planting churches that are grounded in baptist theology but are purposefully different in approaches, missions, and meeting-spaces, we will begin making bold steps into our future as general baptists in Mississippi, ensuring that our denominational footprint is visibly present and firmly planted.

6. Establish a GMBSC/HBCU Scholarship of \$150k

Rationale: Education is one of the keys to personal advancement, wealth creation and institutional security. GMBSC recognizes

and values the role that education plays in the lives of our youth and young adults and we seek to be relevant partners in that journey. The GMBSC/HBCU Scholarship will help students to financially support their secondary education by awarding annual scholarships to graduating seniors accepted to attend a historically black college or university. Special consideration will be given to students pursuing degrees in religious studies, philosophy, counseling, or other pathways to serving in ministry-related fields.

7. Create a Baptist Tech-Net Fund of \$125k

Rationale: The pandemic helped to expose the great gulf that exists within our churches when it comes to technology. Some churches have pivoted with relative ease, while others have struggled to meet, minister, and continue with missions. While everything cannot be solved through technology, there are certainly some places where tech know-how and infrastructure would be of great benefit. The Baptist Tech-Net fund is intended to assist churches that need training and equipment to be able to make the pivot to use more technology. Hi-tech equipment will never replace a hi-touch congregation. But it can assist in carrying out the mission in an ever-evolving world.





MY GBMSC: A STEWARDSHIP INITIATIVE

My GBMSC is a 3-year, multi-level stewardship initiative that will allow us to accomplish the aforementioned objectives. Please note that this initiative is over and above any current registration/officer fees, auxiliary representations, and any other convention-related missions that you already support. We therefore encourage you to make **My GBMSC** a part of your church's annual operational budget for the next 3 years. While we know that this will require a different level of commitment from many of our churches, doing this now will put the convention on a sound fiscal path to be able to carry out those missions most important to us. The chart below demonstrates how 150 churches giving to **My GBMSC** will allow us to reach our goals.

ANNUAL COMMITMENT	PERIOD	PER CHURCH	PROJECTED GOAL
\$20,000	3 Years	\$60,000	5 churches \$300,000
\$10,000	3 Years	\$30,000	5 churches \$150,000
\$5,000	3 Years	\$15,000	20 churches \$300,000
\$3,000	3 Years	\$9,000	40 churches \$360,000
\$1500	3 Years	\$4,500	80 churches \$360,000

150 churches = \$1,470,000



GBMSC PERPETUATE

GBMSC Perpetuate will promote the missions and ministries of the convention by implementing an allocation system of the registration fees received from member churches. By designating a percentage of each church's fees to be directed to various funds and missions of the convention, a consistent stream of revenue will be created for the critical areas of the convention's work. GBMSC Perpetuate will be implemented in 2025, after the 3-year **My GBMSC** Initiative. The following is a suggestion of how GBMSC Perpetuate can be structured to help ensure the financial strength of the convention for generations to come. Below is a proposal of how the \$1200.00 annual church registration would be allocated.

Capital Development	8%	\$96.00
GBMSC Scholarship	2%	\$24.00
Hardship Fund	3%	\$36.00
Fresh Expressions Church Plant	2%	\$24.00
GBMSC Tech-Net	2%	\$24.00
Operational Reserves	3%	\$36.00
Mississippi Baptist Seminary	20%	\$240.00
Home Missions	10%	\$120.00
General Fund	50%	\$600.00
Total 100%		\$1200.00

*Note that more in-depth analysis must be performed to ensure appropriate margins are being maintained and thresholds are being met relative to GBMSC Perpetuate. The figures provided are only approximations

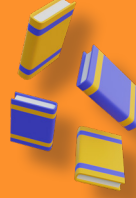


JOIN GMBSC

WHAT DOES THE LOCAL CHURCH GET FROM BEING A MEMBER OF GMBSC?



ACCESS TO TECHNOLOGY ASSISTANCE



ACCESS TO SHARED RESOURCES



DISCOUNTS ON GOODS AND SERVICES



LEGAL CONSULTATION



PRIORITY REGISTRATION AND ACCOMMODATIONS FOR NATIONAL MEETINGS



SOCIAL SERVICES ADVOCACY

VISIT WWW.GMBSC.ORG FOR FULL INFORMATION ON BENEFITS AND MEMBERSHIP SERVICES



WWW.GMBSC.ORG

THE
CROSS
AGENDA
TEXT **70000**
TO GMBSC
TO RECEIVE TEXTS, ALERTS AND
LIVESTREAM LINKS FROM GMBSC

